



FRONT ELEVATION - C



FRONT ELEVATION - U



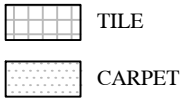
The 2923

Total Heated (C) - 2,923 S.f.

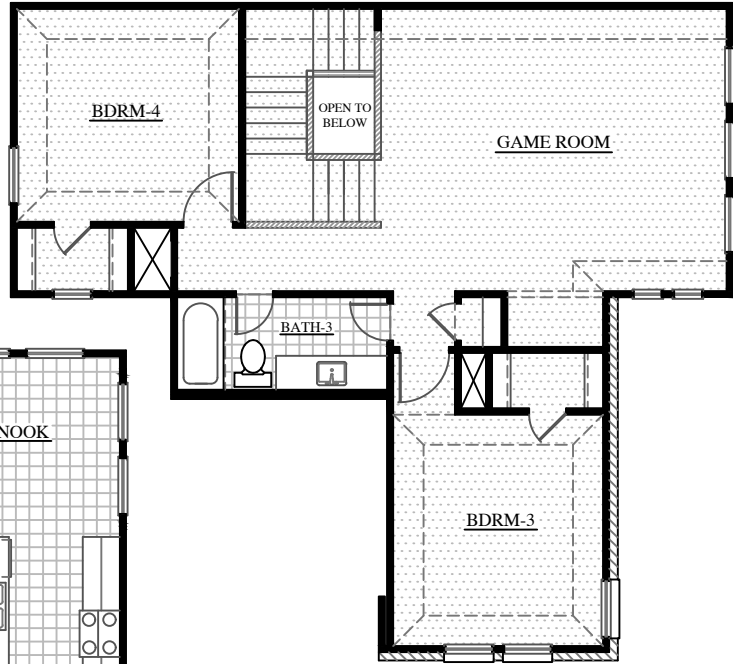
Total Heated (U) - 2,894 S.f.



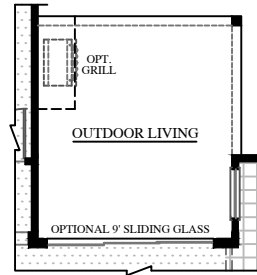
Plans and renderings are for illustrative purposes only and may contain options or detailing that are not standard. The Brohn Group, LLC (DBA Brohn Homes) reserves the right to make changes to pricing, floor plans, specifications, features, materials, dimensions, and elevations without prior notice. Stated dimensions and square footages are approximate and should not be used as representation of the home's precise or actual size. Copyright © 2018 The Brohn Group, LLC (DBA Brohn Homes)



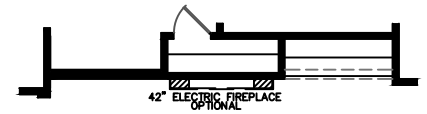
FIRST FLOOR



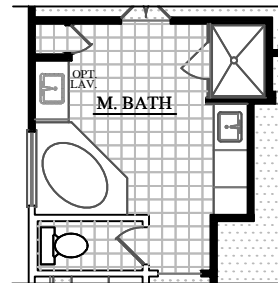
SECOND FLOOR



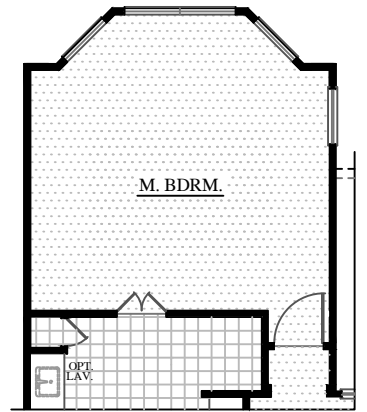
OPT. 9' SLIDING DOOR



OPTIONAL FIREPLACE



OPTIONAL M-BATH



PARTIAL FIRST FLOOR PLAN - BAY WINDOW OPTION



The 2923

Total Heated (C) - 2,923 S.f.

Total Heated (U) - 2,894 S.f.



Plans and renderings are for illustrative purposes only and may contain options or detailing that are not standard. The Brohn Group, LLC (DBA Brohn Homes) reserves the right to make changes to pricing, floor plans, specifications, features, materials, dimensions, and elevations without prior notice. Stated dimensions and square footages are approximate and should not be used as representation of the home's precise or actual size. Copyright © 2018 The Brohn Group, LLC (DBA Brohn Homes)