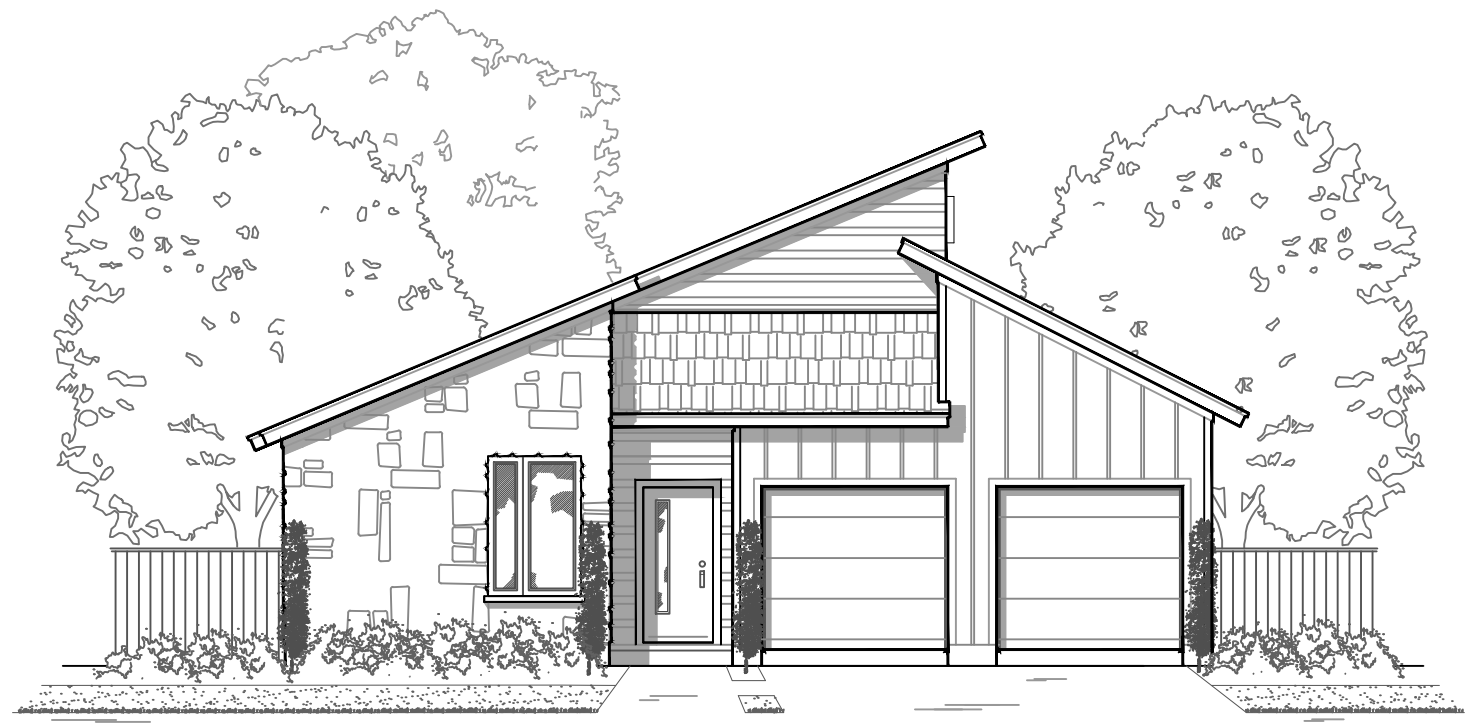


FRONT ELEVATION - C



FRONT ELEVATION - U



**BROHN
HOMES**

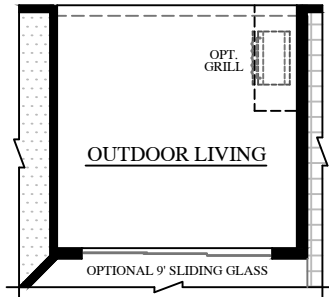
The 1895

Total Heated (C) - 1,895 S.f.

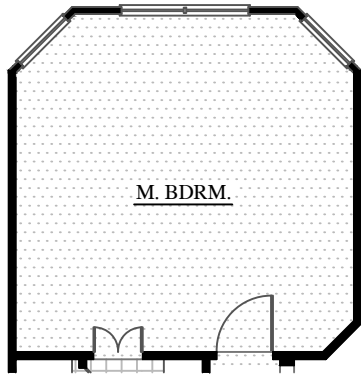
Total Heated (U) - 1,894 S.f.



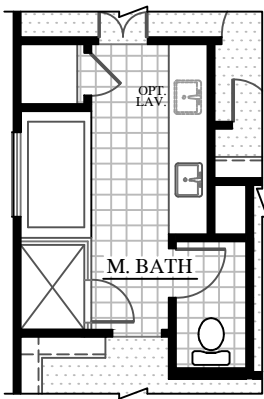
Plans and renderings are for illustrative purposes only and may contain options or detailing that are not standard. The Brohn Group, LLC (DBA Brohn Homes) reserves the right to make changes to pricing, floor plans, specifications, features, materials, dimensions, and elevations without prior notice. Stated dimensions and square footages are approximate and should not be used as representation of the home's precise or actual size. Copyright © 2018 The Brohn Group, LLC (DBA Brohn Homes)



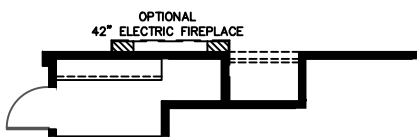
OPT. 9' SLIDING DOOR



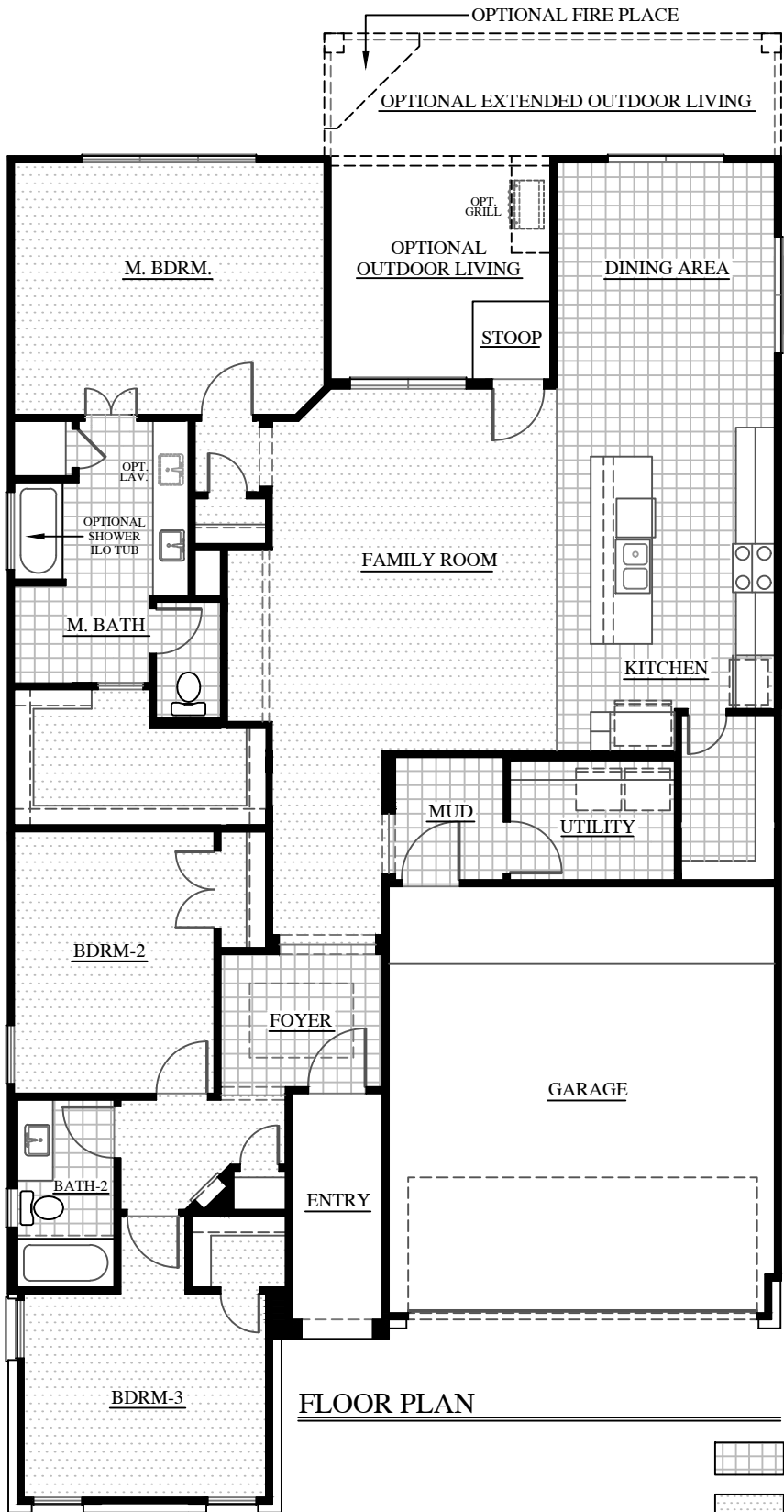
PARTIAL FLOOR PLAN BAY WINDOW OPTION



OPTIONAL M-BATH



OPTIONAL FIREPLACE



FLOOR PLAN

TILE

CARPET



The 1895

Total Heated (C) - 1,895 S.f.

Total Heated (U) - 1,894 S.f.



Plans and renderings are for illustrative purposes only and may contain options or detailing that are not standard. The Brohn Group, LLC (DBA Brohn Homes) reserves the right to make changes to pricing, floor plans, specifications, features, materials, dimensions, and elevations without prior notice. Stated dimensions and square footages are approximate and should not be used as representation of the home's precise or actual size. Copyright © 2018 The Brohn Group, LLC (DBA Brohn Homes)