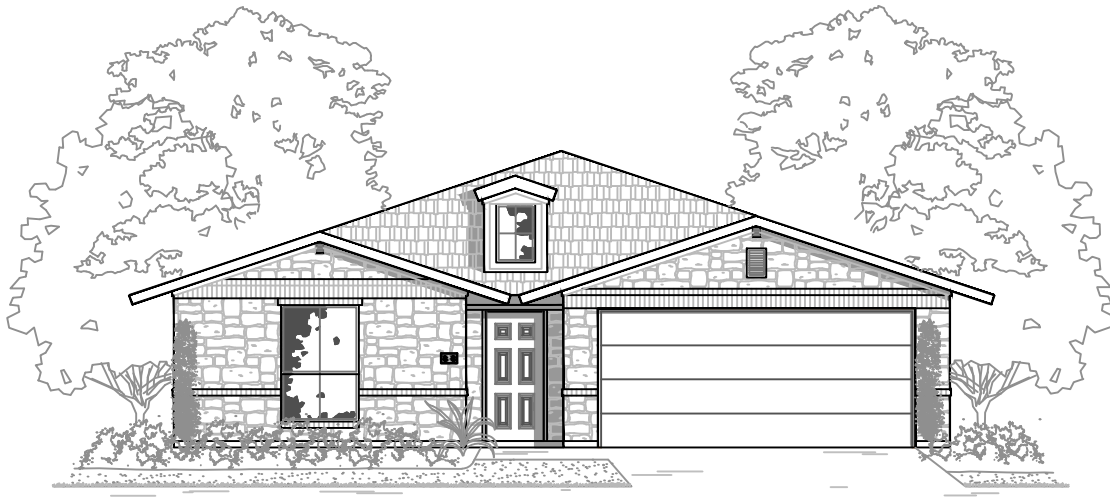
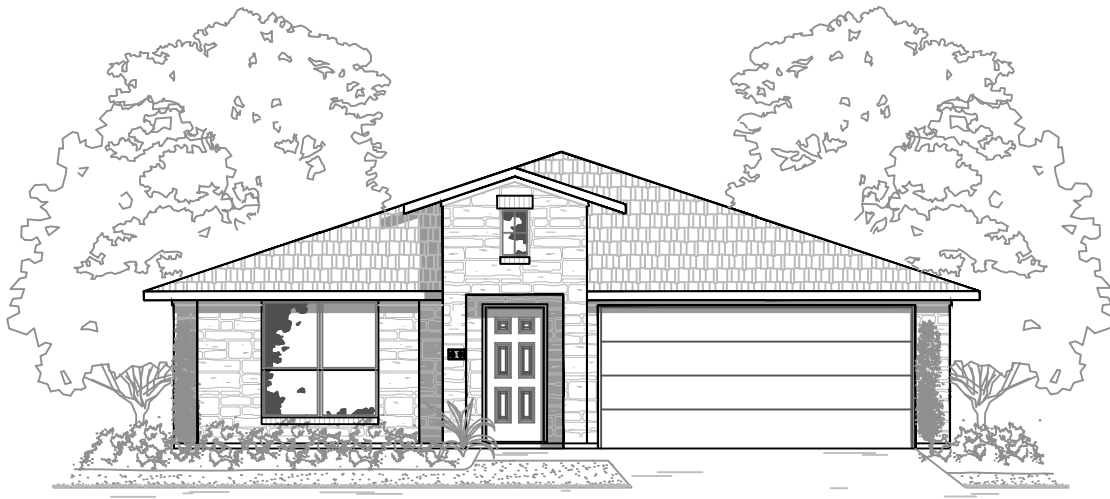


**FRONT ELEVATION - A**



**FRONT ELEVATION - B**



**FRONT ELEVATION - E**

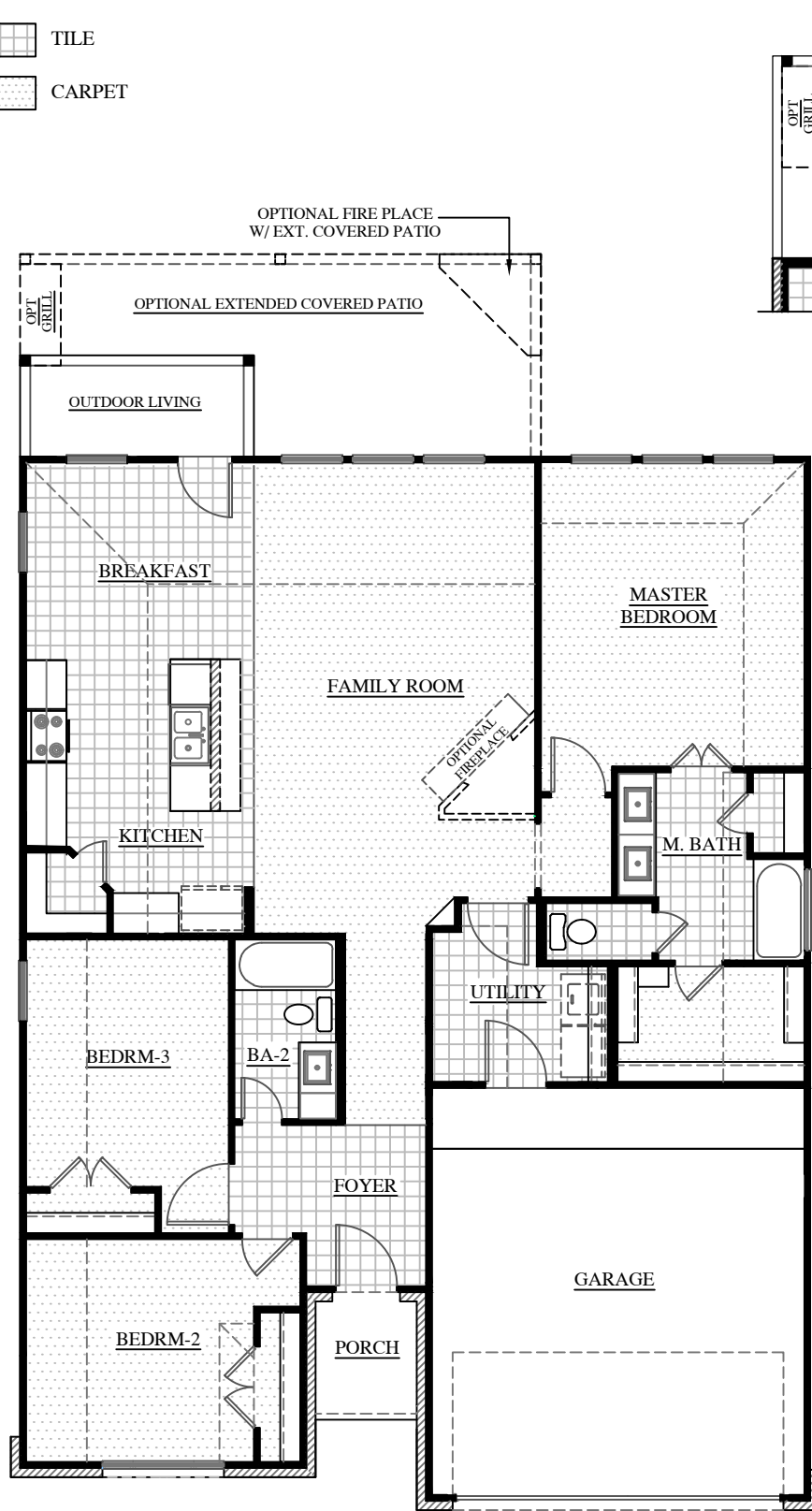
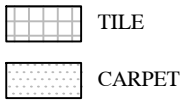


**WATERLOO**  
HOMES BY BROHN

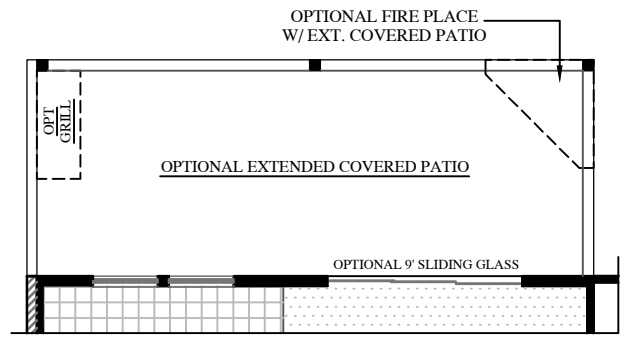
**The 1556**  
Total Heated - 1,556 S.f.



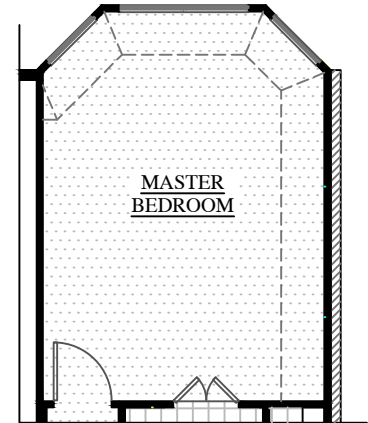
*Plans and renderings are for illustrative purposes only and may contain options or detailing that are not standard. The Brohn Group, LLC (DBA Brohn Homes) reserves the right to make changes to pricing, floor plans, specifications, features, materials, dimensions, and elevations without prior notice. Stated dimensions and square footages are approximate and should not be used as representation of the home's precise or actual size. Copyright © 2018 The Brohn Group, LLC (DBA Brohn Homes)*



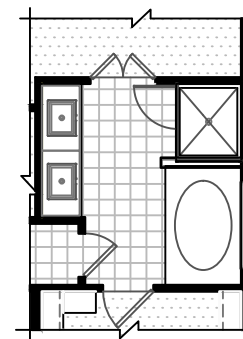
FIRST FLOOR PLAN



PARTIAL FIRST FLOOR PLAN  
OPT. 9' SLIDING DOOR



PARTIAL FIRST FLOOR PLAN -  
BAY WINDOW OPTION



OPTIONAL MASTER BATH



The 1556  
Total Heated - 1,556 S.f.



Plans and renderings are for illustrative purposes only and may contain options or detailing that are not standard. The Brohn Group, LLC (DBA Brohn Homes) reserves the right to make changes to pricing, floor plans, specifications, features, materials, dimensions, and elevations without prior notice. Stated dimensions and square footages are approximate and should not be used as representation of the home's precise or actual size. Copyright © 2017 The Brohn Group, LLC (DBA Brohn Homes)